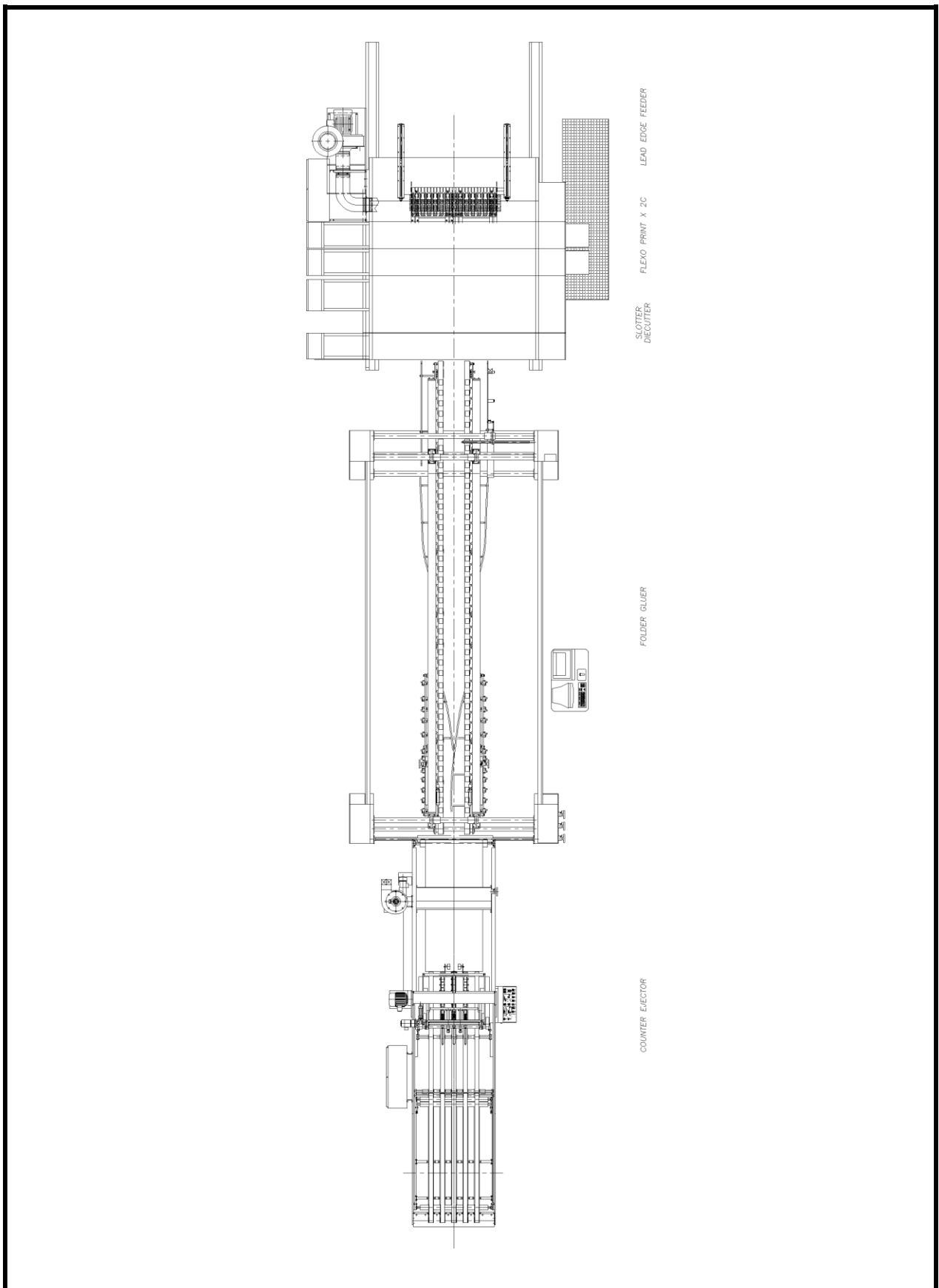


4-1. Description of the Visual Appearance



4-2. Specifications of Machine

(1) General specifications

(Unit : mm)

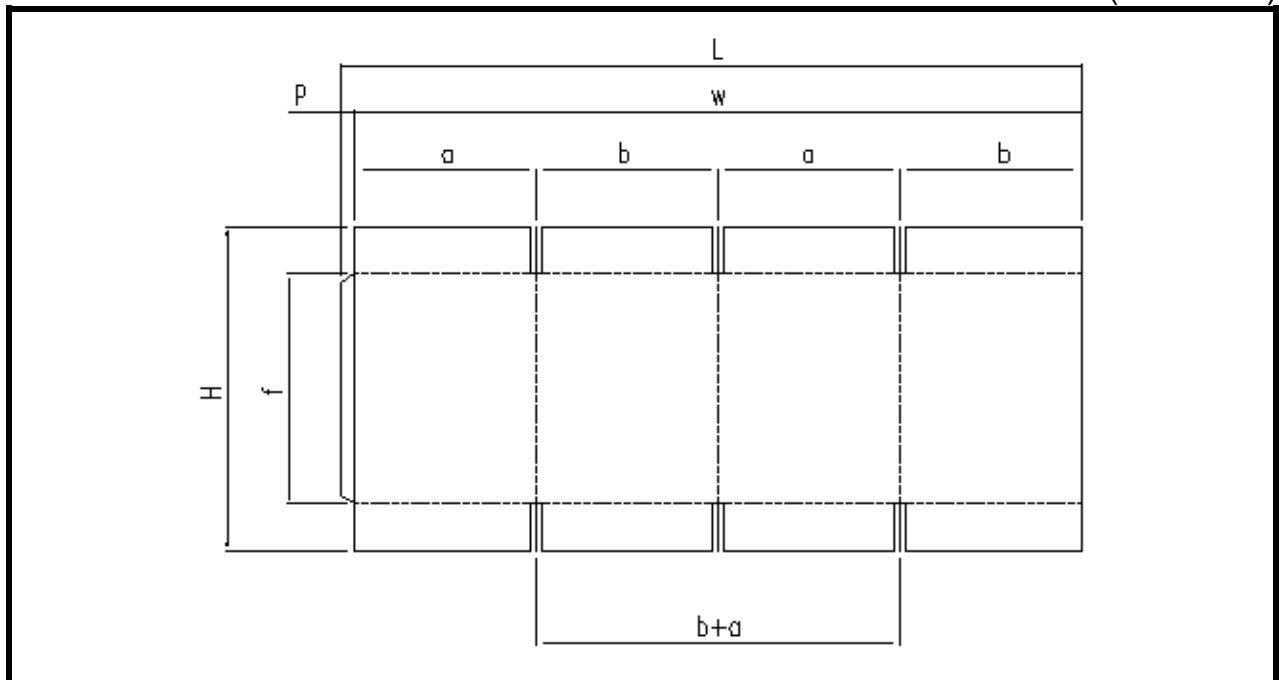
Machine Size		Maximum Sheet feed	Maximum Skip feed	Minimum Sheet feed	Maximum Print size	Machine speed
1200	2700	1200 X 2750	1461 x 2750	320 x 600(800)	1170 X 2700	220spm

(2) Weight of each unit (Approximately)

Feeder	Printers	Slotter	Die-Cutter	F/Gluer	C/Ejector	Total
8 tons	5 tons	8 ton	5 ton	10 ton	6 ton	42 ton

(3) Minimum / Maximum box size

(Unit : mm)



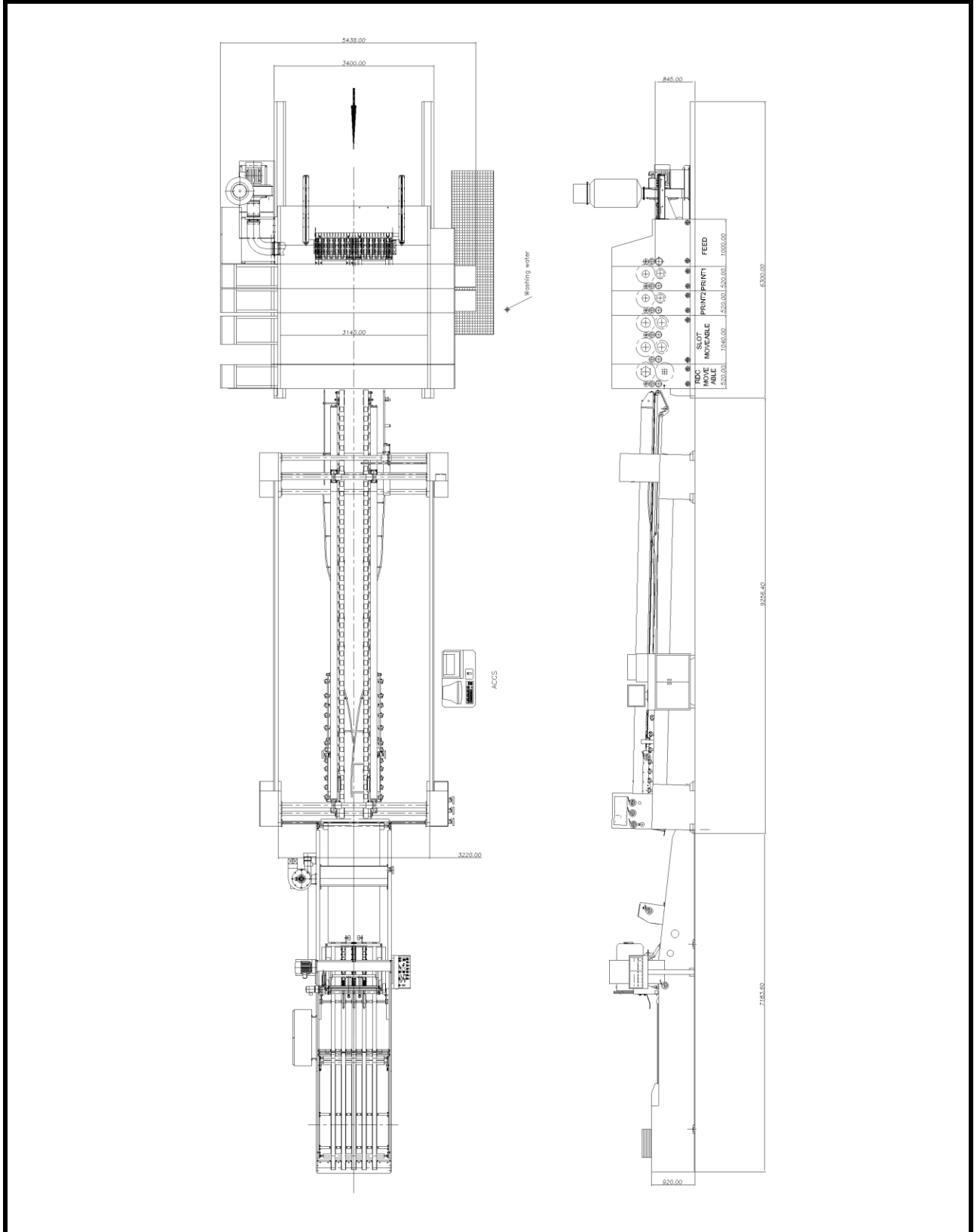
	For Printer Slotter	For Folder Gluer	Remark
	Minimum	Minimum	
a	150	200	
b	150	200	
a+b	300	400	
f	100	100	
p	50	50	
H	320	320	
L	800	800	

At skip feed : Maximum l = 1461



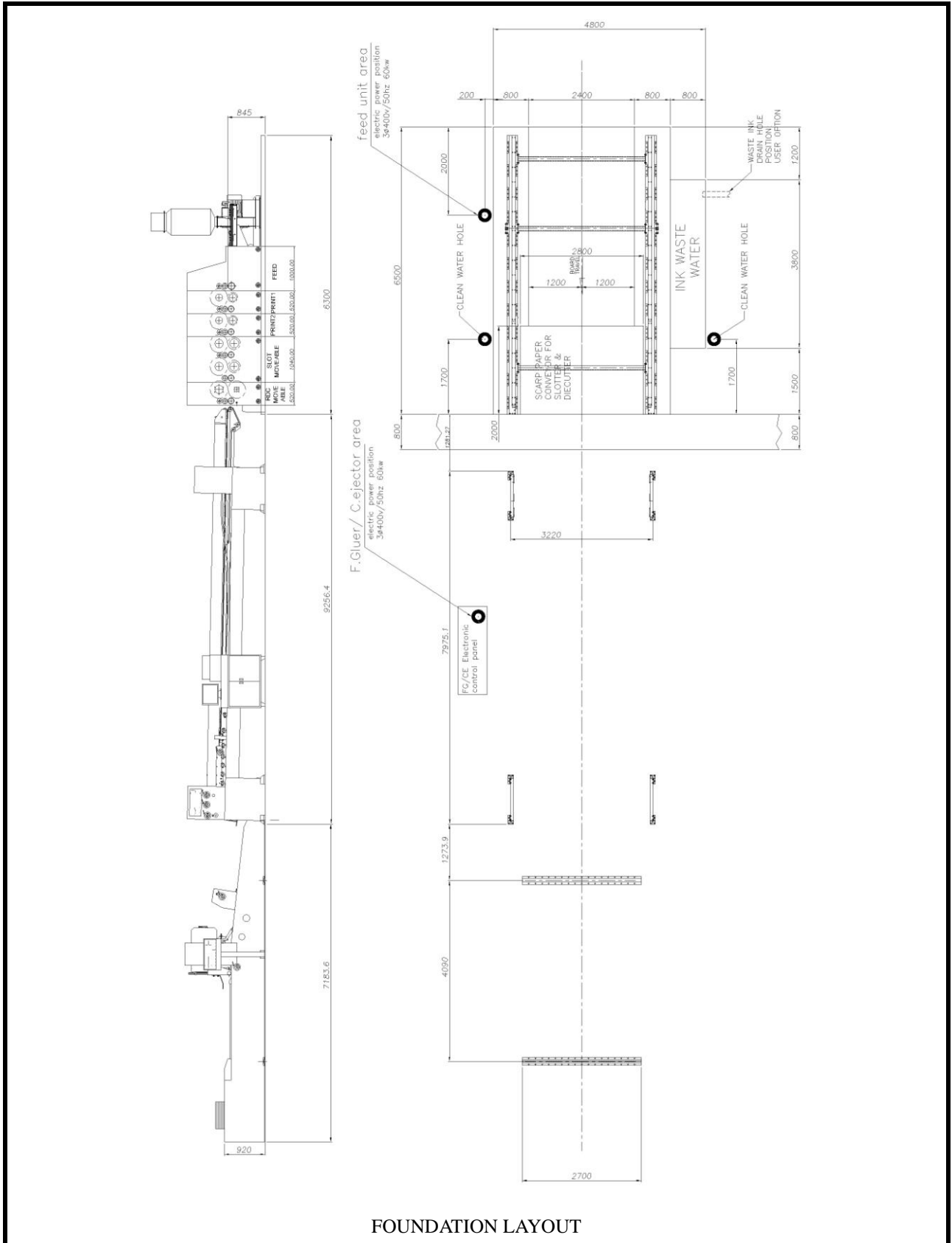
4-3. Layout and Outside Dimension of the Machine

(1) Machine Layout



4-4. Utility Condition

(1) Location of utility supply



FOUNDATION LAYOUT

(2) Specification of required utilities**Main power**

The main electric power supply for 2 machine areas(Feed unit / F.Gluer and C.Ejector area) should be **3Phases, 400VAC, 50 Hz** system included proper Protection Earth system.

Power capacity : **3 Phases, 400VAC, 50Hz, 135A, PE**

The electric power supply system should be stable and big enough capacity for machine operation.

The maximum voltage variation for operating the machine without any electrical trouble is plus 10 % and minus 5% of rated voltage.

The **Protection Earth** system should be prepared separately for electric welding work around the machine side in order to avoid electric shock on electronic parts due to electric welding work with direct connection of ground to the machine.

Air Supply

The compressed air supply for the machine should be stable, cleaned for oil and solid contents free and dried for eliminating moisture contents.

The piping system for compressed air supply system should be over 3/8 inches.

The required pressure is 4~6 Kg /m² (85~100 psig, 6~7bar)

Water Supply

The water supply for the machine should be stable and cleaned for solid contents and toxic, acid free.

The piping system for water supply system should be over 3/8 inches.

The required pressure is 2 Kg /cm² (42~70 psig, 3bar)

Warm water supply system is recommended for fast wash up in cold weather.

Waste water treatment system is required for cleaned water.

