

ReUse of MAE@ME

Standard template

*Mandatory input

MAE / Process		Further information		
MAE manufacturer*	Rehm Thermal Systems GmbH	SEC*	[Y/N]	N
Machine-Type*	VXP+ nitro (Typ 734 Vac L (3850))	Process Prefix – Link to DMD *		https://inside-docupedia.bosch.com/content/ance/display/DMDLive/DMDTYPE++Reflow+soldering+of+PCB
Serial-No.*	5861	Box dimensions and type of recent product*	[LxWxH mm]	400*300
Inv.-No./ Equip.-No.*	10177271/141812	Foot print of MAE*	[LxWxH mm]	7090*1676*1626
Year of manufacture*	2022			
Plant*	RtP2/MSP			



Further information		
Type of process core	If applicable	manufacturer's description
Transport system	One-, dual lane, offline, etc.	One-lane
Control system	e.g. IPC/PLC	
Connection to MES	[Y/N]	N
Condition*	Ready to use	
Miscellaneous		
Contact person	Vadim Schäfer (RtP2/MSP4.1)	



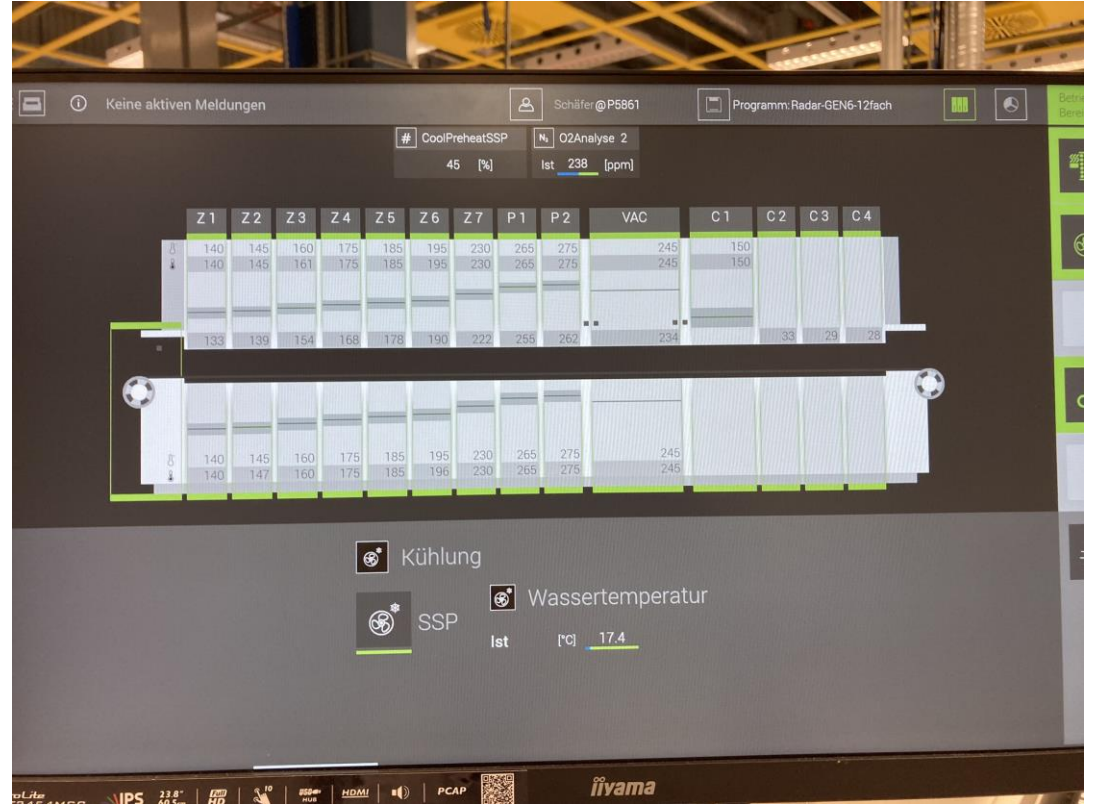
ReUse of MAE@ME Pictures



ReUse of MAE@ME Pictures



ReUse of MAE@ME Pictures



Vicon Software

ReUse of MAE@ME Pictures

